



Lezette Briedenhann

Non-Principal Property
Practitioner
Registered with PPRA
(FFC 114 395 6)

082 975 9597
lezette.b@harcourts.co.za

Contact Harcourts Winelands

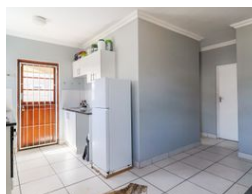
021 8828136

281 Main Road
Paarl
7600



SOLE MANDATE

Web Ref RL36395



R799,000

3 1

Monthly Bond Repayment R8,111.68

Calculated over 20 years at 10.75% with no deposit.

Transfer Costs R25,898.00 **Bond Costs** R19,565.00

These calculations are only a guide. Please ask your conveyancer for exact calculations.

Monthly Levy R490 **Monthly Rates** R300

Klappmuts - Pinotage Village

Whether you're looking to make this charming house your new home or an excellent rental investment, Pinotage Villas is the ideal choice.

Key Features:

Tranquil location,
Pet-Friendly
Family-Friendly Atmosphere
Affordable Living
Top-Notch Security. The complex features 24-hour guard surveillance and camera monitoring for your peace of mind.

Don't miss this opportunity! Contact me to arrange a viewing and take the first step towards owning this delightful property.

Features

Interior

Bedrooms	3
Bathrooms	1
Kitchens	1
Recep. Rooms	1
Furnished	No

Exterior

Carports / Parkings	2
Security	No
Pool	No
Views	False

Sizes

Floor Size	57m ²
Land Size	119m ²

Extras

24 Hour Access Estate

