



Maureen Nel

Non-Principal Property Practitioner
Registered with PPRA
(FFC 080 586 7)

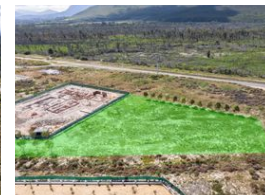
082 449 0900

maureen.dw@harcourts.co.za

Contact Harcourts Winelands

021 882 8136

281 Main Road
Paarl
7600



R20,475,000

Monthly Bond Repayment R211,340.57

Calculated over 20 years at 11% with no deposit.

Transfer Costs R2,334,121.00 **Bond Costs** R132,285.00

These calculations are only a guide. Please ask your conveyancer for exact calculations.

Live here - Live limitless

EXCLUSIVE JOINT MANDATE : Vacant land for the discerning individual Unmissable opportunity in The Reserve on Val de Vie Estate. Erf size in excess of 4800m², for your ultimate country living experience.

Val de Vie Estate is a state-of-the-art wellness estate that offers its homeowners a sophisticated country lifestyle as well as five-star stabling and care, riding and polo lessons.

The Estate is perfect for walks along its 1.5km Berg River Frontage and shimmering lakes. Val de Vie Estate is home to a superb Lifestyle Center with fully equipped gym, spinning and Pilate's classes, two tennis courts, two squash courts, saunas, steam rooms, 25m indoor heated pool and the Ryk Neethling School of Swimming. Local to the estate you will find Back's Restaurant and the new Fleet Coffee Shop at the Polo Pavilion, LHuguenot Venue and...

Features

