



Maureen Nel

Non-Principal Property
Practitioner
Registered with PPRA
(FFC 080 586 7)
082 449 0900

maureen.dw@harcourts.co.za

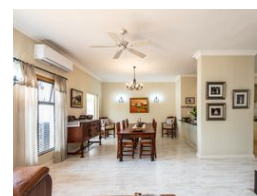
Contact Harcourts Winelands

021 8828136

281 Main Road
Paarl
7600



Web Ref RL48854



R8,950,000

3 2 2

Monthly Bond Repayment R89,355.00

Calculated over 20 years at 10.5% with no deposit.

Transfer Costs R859,952.00 **Bond Costs** R80,035.00

These calculations are only a guide. Please ask your conveyancer for exact calculations.

Single-Storey Home overlooking green space with mountain views

EXCLUSIVE SOLE MANDATE. A beautiful 3 bedroom single-storey home situated in a quiet cul-de sac opposite the fynbos reserve.

The private entrance leads up to the double front doors and into the foyer. The open plan kitchen offers a gas hob / electric oven, extractor fan, breakfast bar, pantry and a large separate scullery and laundry.

There is direct access from the scullery to the indoor entertainment area, featuring a braai, with doors opening up to the beautifully manicured garden and a luscious vineyard-covered pergola.

The home further comprises of a dining room, TV lounge, study nook, and three spacious bedrooms with ample closet space. The main bedroom has an en-suite bathroom with the other two sharing the 2nd bathroom.

Double garage with direct access to the kitchen.

Val de Vie Estate offers a sophisticated...

Features

Pets Allowed Yes

Interior

Bedrooms	3
Bathrooms	2
Kitchens	1
Recep. Rooms	2
Furnished	No

Exterior

Garages	2
Carports / Parkings	2
Security	Yes
Pool	No
Views	True

Sizes

Floor Size	259m ²
Land Size	652m ²

