



Maureen Nel
Non-Principal Property
Practitioner
Registered with PPRA
(FFC 080 586 7)
082 449 0900

maureen.dw@harcourts.co.za

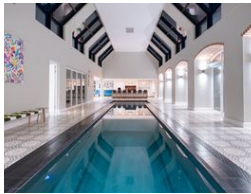
Contact Harcourts Winelands

021 8828136

281 Main Road
Paarl
7600



Web Ref RL32419



R85,000,000

7 9 6

Monthly Bond Repayment R862,944.61
Calculated over 20 years at 10.75% with no deposit.

Transfer Costs R10,722,371.00 **Bond Costs** R132,285.00
These calculations are only a guide. Please ask your conveyancer for exact calculations.

Monthly Rates R35,000

A Lifestyle of Distinction and Serenity in Val de Vie Estate

EXCLUSIVE JOINT MANDATE. PRICE EXCLUDES VAT.

Experience the epitome of countryside luxury on an expansive 31,652 sqm property in Val de Vie Estate, where sophistication and natural beauty unite. Among the estate's largest holdings, this property is ideal for discerning buyers seeking a rare blend of farmhouse charm and refined elegance in an elite wellness community. Surrounded by private vineyards, olive groves, and manicured gardens, this remarkable Villa boasts a sprawling buildable area of 4,837 sqm, with an exceptional water allocation of 16,300 KL annually, ensuring lush grounds and seamless comfort. Designed with foresight, the Villa can easily be transformed into a double-storey masterpiece, offering flexibility for future expansion.

With paddocks and allowances for up to ten livestock, including horses, this...

Features

Pets Allowed		Yes			
Interior		Exterior		Sizes	
Bedrooms	7	Garages	6	Floor Size	1,390m²
Bathrooms	9	Carports / Parkings	10	Land Size	31,652m²
Kitchens	1	Security	Yes		
Recep. Rooms	6	Pool	Yes		
Studies	1	Views	True		
Furnished	No				

