



Maureen Nel

Non-Principal Property
Practitioner
Registered with PPRA
(FFC 080 586 7)

082 449 0900

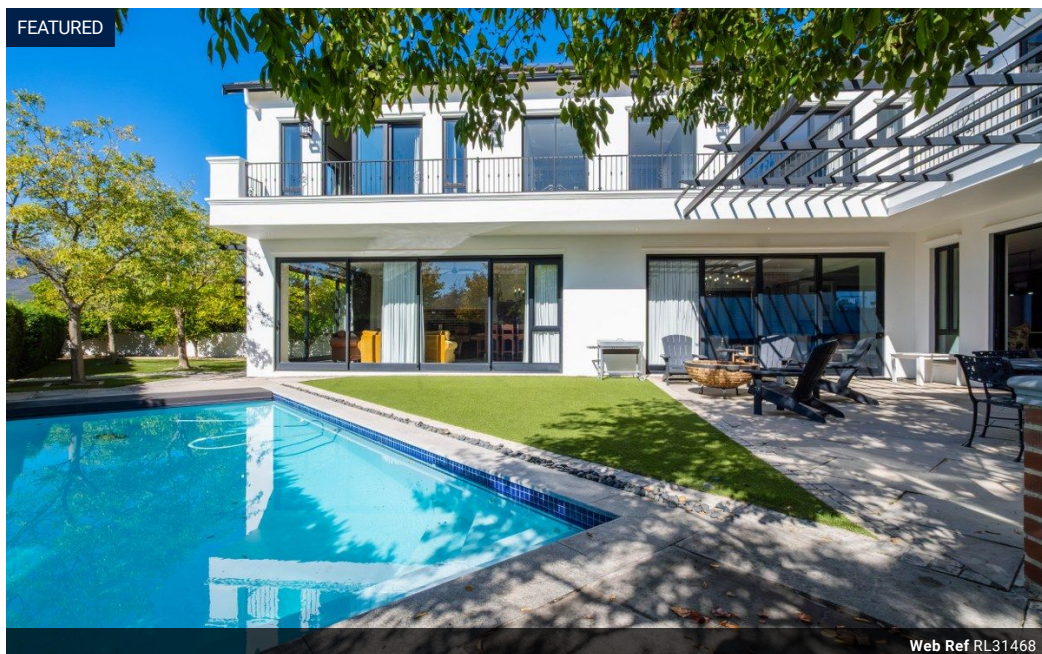
maureen.dw@harcourts.co.za

Contact Harcourts Winelands

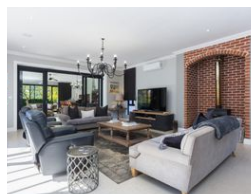
021 8828136

281 Main Road
Paarl
7600

FEATURED



Web Ref RL31468



R19,850,000

Monthly Bond Repayment R201,522.95

Calculated over 20 years at 10.75% with no deposit.

Transfer Costs R2,252,871.00 **Bond Costs** R132,285.00

These calculations are only a guide. Please ask your conveyancer for exact calculations.



4



4.5



3

Elegant North Facing Family Home in Prime Location

Proudly presenting another Sole Mandate.

This beautifully appointed family home offers the ideal blend of comfort, luxury, and convenience, perfectly positioned alongside lush green space and directly opposite one of Val de Vie's Lifestyle Centres.

A welcoming foyer effortlessly flows into a stylish open-plan dining area and a contemporary kitchen, boasting a sophisticated mix of white and dark cabinetry, integrated appliances, a walk-in pantry, and a separate scullery. The kitchen connects seamlessly to a warm and inviting lounge with a cozy fireplace, leading into a fully enclosed entertainment area featuring a built-in bar and braai – perfect for year-round hosting.

Glass sliding doors open to a sun-drenched north-facing patio, sparkling swimming pool with solar-powered cover, and a beautifully landscaped garden,...

Features

Pets Allowed		Yes			
Interior		Exterior		Sizes	
Bedrooms	4	Garages	3	Floor Size	730m²
Bathrooms	4.5	Security	Yes	Land Size	1,120m²
Kitchens	1	Pool	Yes		
Recep. Rooms	3	Views	True		
Furnished	No				

