



Maureen Nel

Non-Principal Property Practitioner
Registered with PPRA
(FFC 080 586 7)
082 449 0900

maureen.dw@harcourts.co.za

Contact Harcourts Winelands

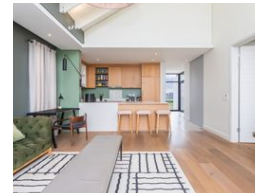
021 882 8136

281 Main Road
Paarl
7600



SOLE MANDATE

Web Ref RL34236



R6,950,000

Monthly Bond Repayment R71,737.09

Calculated over 20 years at 11% with no deposit.

Transfer Costs R628,266.00 **Bond Costs** R70,535.00

These calculations are only a guide. Please ask your conveyancer for exact calculations.



Two-Bedroom Luxury Apartment

Exclusively available, this stunning first-floor apartment in Polo Village I offers the perfect blend of style and convenience, located just steps away from popular delis and restaurants. Designed with exquisite attention to detail, this two-bedroom apartment features bespoke interiors and an open-plan living area that flows seamlessly onto your private balcony—ideal for relaxing or entertaining.

Experience luxury living in one of the Estate's most sought-after locations.

Features: backup -up battery and inverter, Oak Engineered multi-layer flooring, Ceasarstone counter tops, SMEG under-counter electric oven, ceramic hob; Integrated dishwasher, fridge / freezer & washer / dryer and basement parking and communal swimming pool.

Val de Vie Estate is a state-of-the-art wellness estate that offers its homeowners a...

Features

Interior

| | |
|--------------|----|
| Bedrooms | 2 |
| Bathrooms | 2 |
| Kitchens | 1 |
| Recep. Rooms | 1 |
| Furnished | No |

Exterior

| | |
|---------------------|------|
| Carports / Parkings | 1 |
| Security | Yes |
| Pool | No |
| Views | True |

Sizes

| | |
|------------|------------------|
| Floor Size | 96m ² |
|------------|------------------|

