



Nicoline Grobler
Non-Principal Property Practitioner
Registered with PPRA (FFC 088 147 0)
083 750 3856
nicoline.grobler@harcourts.co.za



Maya van der Poel
Candidate Property Practitioner
Registered with PPRA (FFC 123 230 1)
082 444 3800
maya.vdp@harcourts.co.za

Contact Harcourts Winelands

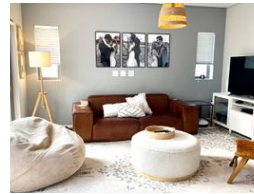
021 882 8136

281 Main Road
Paarl
7600



SOLE MANDATE

Web Ref RL31671



R3,500,000

3 2 1

Monthly Bond Repayment R36,126.59
Calculated over 20 years at 11% with no deposit.

Transfer Costs R221,714.00 **Bond Costs** R47,840.00
These calculations are only a guide. Please ask your conveyancer for exact calculations.

Monthly Levy R2,000 **Monthly Rates** R1,750

Prime Estate Living

Winelands Lifestyle - Discover this generously sized home located within a secure estate, where families can truly embrace the Winelands way of life.

The open-plan kitchen features high-end finishes and seamlessly connects to a spacious living area. A sliding door opens up to a private entertainment and braai area, perfect for creating lasting memories with family and friends. The bedrooms are spacious, with the main en-suite with shower, while the second bathroom is equipped with both a bath and a shower.

Inside the estate, you'll find a highly regarded pre-school, making it convenient for dropping off the little ones on your way to work.

Don't miss this incredible opportunity to enjoy the ultimate family lifestyle in Paarl!

Features

Pets Allowed Yes

Interior

Bedrooms	3
Bathrooms	2
Kitchens	1
Recep. Rooms	2
Furnished	No

Exterior

Garages	1
Carports / Parkings	2
Security	Yes
Pool	No
Views	False

Sizes

Floor Size	114m ²
Land Size	239m ²

