



Adell Ferreira

Non-Principal Property Practitioner
Registered with PPRA (FFC 114 377 0)
083 964 1155
adell.f@harcourts.co.za



Yolande Naude

Non-Principal Property Practitioner
Registered with PPRA

(FFC 117 115 5)

079 920 5390

yolande.naude@harcourts.co.za

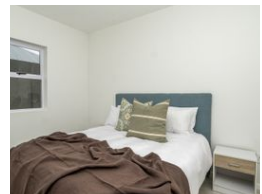
Contact Harcourts Winelands

021 882 8136

281 Main Road
Paarl
7600



Web Ref WWS35755



R1,225,000



Monthly Bond Repayment R12,644.31

Calculated over 20 years at 11% with no deposit.

Transfer Costs R35,367.00 **Bond Costs** R27,105.00

These calculations are only a guide. Please ask your conveyancer for exact calculations.

Special Levy R1,545

Ground Floor 1 Bedroom Apartment in Secure Estate

This lovely 1 bedroom apartment is situated on the ground floor of Pearl Dew Heights in Honeydew Estate. It gets lots of natural light, has lovely high ceilings and is an open plan design. The unit has a full bathroom with separate shower and a new modern kitchen.

Honeydew Country Estate, is nestled in the heart of picturesque Paarl, Western Cape, and is a secure residential estate with manned security 24 hours per day.

While being located conveniently close to some of the most renowned schools in the Western Cape, such as Paarl Boys' and Paarl Girls' Primary and High Schools, as well as co-ed Paarl Gymnasium, the estate offers lucrative residential investment opportunities. The apartment offers modern finishes and solar geyser and Fibre is included. The unit has a parking bay and off-street parking for visitors.

First-time...

Features

Pets Allowed Yes

Interior

Bedrooms	1
Bathrooms	1
Kitchens	1
Recep. Rooms	1
Furnished	No

Exterior

Carports / Parkings	2
Security	Yes
Pool	No
Views	True

Sizes

Floor Size	45m ²
------------	------------------

Extras

TV Port Views: Mountain Locality: Close To Schools Locality: Close To Shops Locality: Close To Transport Living Area: Open Plan Kitchen: New Kitchen: Open Plan Kitchen: Finish Kitchen Finish: Granite Main Bedroom: Double Main Bedroom: Built-in-robe Main Bathroom: Bath Main Bathroom: Separate Shower Garaging / Carparking: Off Street Condition: New Window/door Frames: Aluminium Water Supply: Town Supply Sewerage: Mains Security: Intercom

