



**James Visser**

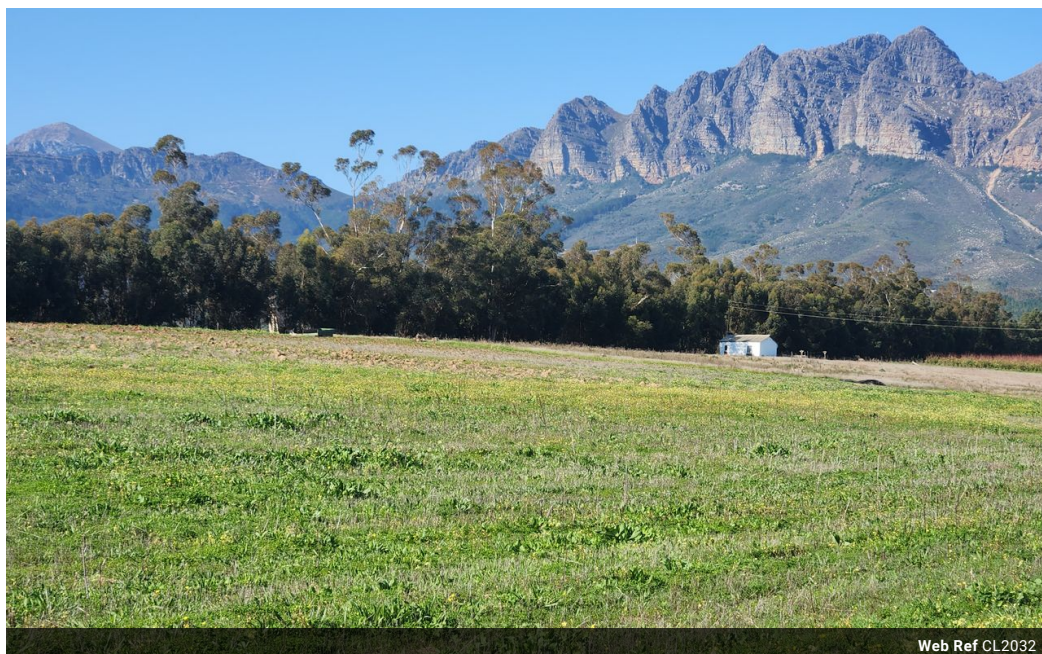
Non-Principal Property  
Practitioner  
Registered with PPRA  
(FFC 069 283 1)  
082 578 2161

james.visser@harcourts.co.za

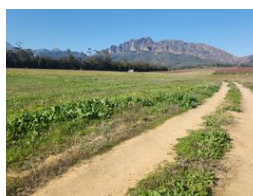
Contact Harcourts Winelands

021 882 8136

281 Main Road  
Paarl  
7600



Web Ref CL2032



## R20,000,000

0 0

### Wellington farm for sale

Welvanpas portion – 32ha production unit a mere 1km from the quint town of Wellington in the Cape Winelands has beautiful mountain views with great lifestyle potential.

The farm is currently planted to approximately 2.9ha of wine grapes and 9.4ha of plums all under drip and micro irrigation. Water is derived from the local scheme and supplemented by boreholes and earthen dams (1 of which needs repairs) with pump house.

The only infrastructure on the property is one labourers cottage that is still occupied.

### Features

**Zoning** Agricultural

**Sizes**

Land Size 32Ha

